



Standard Brightness (2835/90/CC)

Our new constant current led strip allows a run of 10m, 20m, 30m, 40m & 50m with a SDL suitable driver connected at one end of the strip. This results in no dimming caused by voltage drop across the full length of the strip. The current through each LED is constant to maintain the same brightness from end to end.



SPECIFICATION

Part No.	2835/90/CC
Voltage	48Vdc
Power Consumption	5.8W
LED Qty	144 per metre
LED Type	2835
Size (WxH)	12mm x 1.6mm
Cutting Interval	Every 24 LEDs
Colours Available	Warm White (WW) 3000k Natural White (NW) 4000k Pure White (PW) 6000k

THE RIGHT POWER SUPPLY

SDL154CC	Up to 10m
SDL154CC	Up to 20m
SDL350CC	Up to 30m
SDL350CC	Up to 40m
SDL350CC	Up to 50m

Dimensions

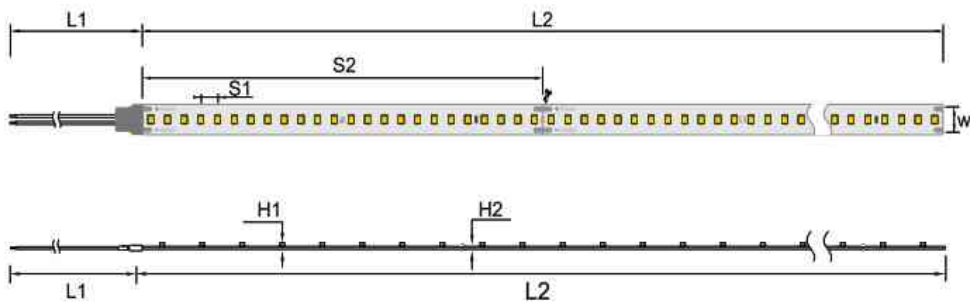
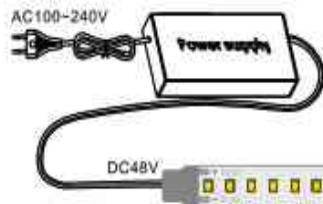


Chart for Dimensions

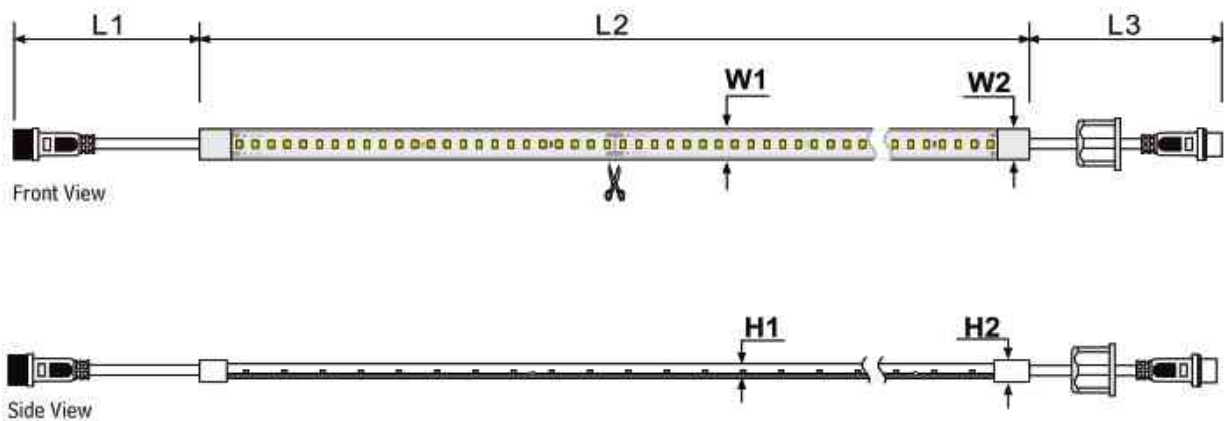
Symbol	Millimeters	Inches	Symbol Description
L1	150.0	5.905	Wire length
L2	50000.0	1968.50	The Length of the LED light strip(50m)
W	12.0	0.4724	The width of the PCB
S1	6.94	0.2732	LED spacing
S2	166.66	6.5614	Mini. cutting length (24LEDs/unit)
H1	1.6	0.0511	The height of the LED light strip
H2	0.3	0.0118	The thickness of the PCB

Standard Brightness (2835/90/CC)


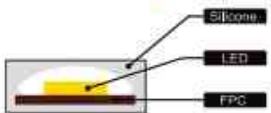
Connect Drawing



The max 50 meter



IP67 Dimensions

IP Rating and Materials	Symbol	Millimeters	Inches	Description
IP 67  	L1	150.0	5.905	The Length of the wire
	L2	50000.0	1968.50	The Length of the led strip (max. length 50 m)
	L3	150.0	5.905	The Length of the wire
	W1	14.0	0.5511	The width of the waterproof LED light strip
	W2	16.0	0.6299	The width of the terminal
	H1	4.9	0.1929	The height of the waterproof LED light strip
	H2	4.5	0.1771	The height of the terminal

Notes: Materials for Waterproof: Silicone tube (UV resistant) Transmittance: 94%